

Durable and fireproof,
litter and cigarette bins
for all premises,
indoor and outdoor



TOKSET

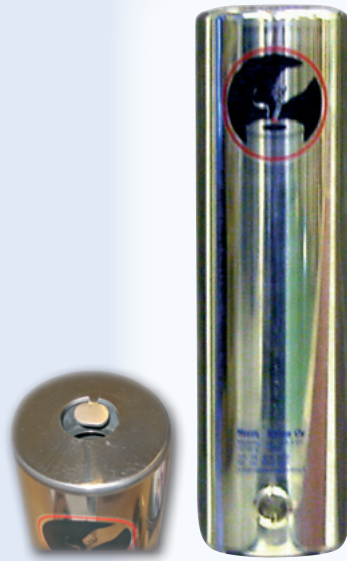
CATALOG

STAINLESS STEEL IS A LASTING AND ECONOMIC SOLUTION

All our stainless steel products are in accordance with the AISI 304 quality standards, and so they are easy to maintain and long-lasting. They withstand changes in the weather and air pollution. The only servicing action we recommend is lubrication of the lock and pivoted parts 1-2 times a year. The steel surfaces of the basic design range products are highly-polished. Fire safety has been taken to attention for all products.

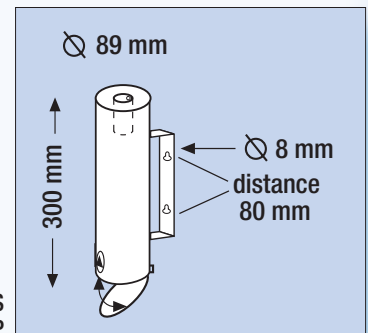


Tokset quality is made of Finnish graftmanship combined with top design and best materials



Fire-safe cigarette bin M

- High-polished stainless steel
- Wall or Pole mounted
- Triangular key lock
- Cigarette extinguishing blade
- Internal tube reduces oxygen and prevents smoke accumulation
- Simple to empty using the hinged base
- Capacity 1.75 L
- Weight 1.3 kg

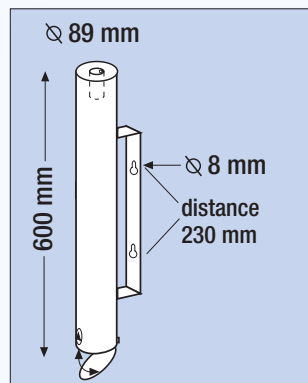


Wall mounted 89-300KS
Pole mounted 89-300KP

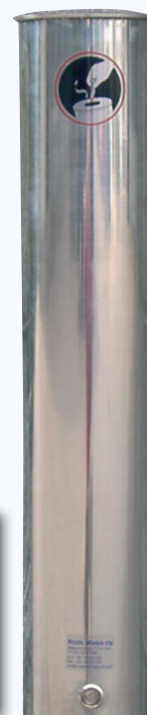


Fire-safe cigarette bin L

- High-polished stainless steel
- Wall or Pole mounted
- Triangular key lock
- Cigarette extinguishing blade
- Internal tube reduces oxygen and prevents smoke accumulation
- Hinged base
- Capacity 3.5 L
- Weight 2.5 kg

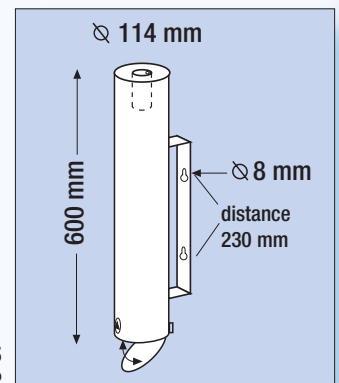


Wall mounted 89-600KS
Pole mounted 89-600KP



Fire-safe cigarette bin XL

- High-polished stainless steel
- Wall or Pole mounted
- Triangular key lock
- Cigarette extinguishing blade
- Internal tube reduces oxygen and prevents smoke accumulation
- Simple to empty using the hinged base
- Capacity 5.8 L
- Weight 3.3 kg



Wall mounted 114-600KS
Pole mounted 114-600KP

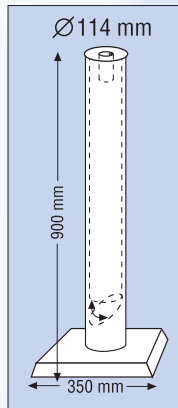
Fire-safe cigarette bin XL

FREE-STANDING

- High-polished stainless steel
- Choice of three bases
- Triangular key lock
- Cigarette extinguishing blade
- Internal tube reduces oxygen and prevents smoke accumulation
- Top emptying
- Base-hinged internal container made from stainless steel
- Internal container capacity 6.2 L
- Simple and safe emptying
- Stainless steel base weight 17 kg

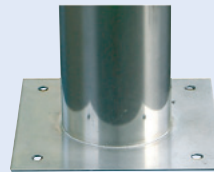


Stainless steel base 114-900K1
Flange base 114-900K2
Concrete base 114-900K4



**"For five star premises
five star litter containers"**

Hotels, restaurants and coffee bars demand from their litter containers, durability and ease of use. Stainless steel keeps its clean. Emptying is simple.



Products on this page are also available with a Flange base

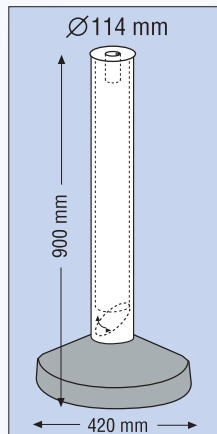
Fire-safe cigarette bin XL

FREE-STANDING

- High-polished stainless steel
- Choice of three bases
- Triangular key lock
- Cigarette extinguishing blade
- Internal tube reduces oxygen and prevents smoke accumulation
- Top emptying
- Base-hinged internal container made from stainless steel
- Internal container capacity 6.2 L
- Simple and safe emptying
- Pebbled cement base weight 27 kg



Stainless steel base 114-900K1
Flange base 114-900K2
Concrete base 114-900K4



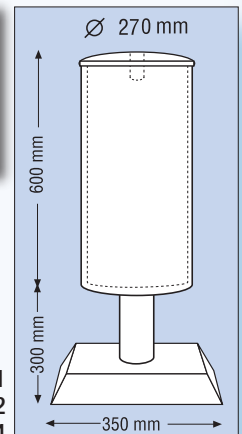
Fire-safe cigarette bin EXPO

FREE-STANDING

- High-polished stainless steel
- For large indoor and outdoor areas
- Choice of three bases
- Triangular key lock
- Cigarette extinguishing blade
- Internal tube reduces oxygen and prevents smoke accumulation
- Capacity 30 L
- Stainless steel base
- Internal aluminium container enabling safe emptying by way of the top
- Simple to empty
- weight 21 kg



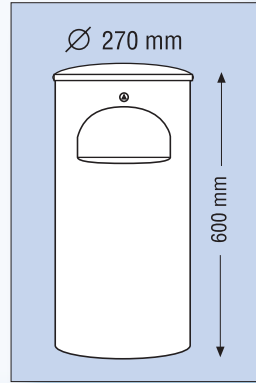
Stainless steel base 30-900TK1
Flange base 30-900TK2
Concrete base 30-900TK4





Litter-Safe™ M

- Highly polished stainless steel
- Capacity 30 ltr
- Wall or Pole mounted
- Internal aluminium container enabling safe top emptying
- Impressive design
- Sturdy construction
- Fire-safe
- Triangular key lock
- Weight 9 kg

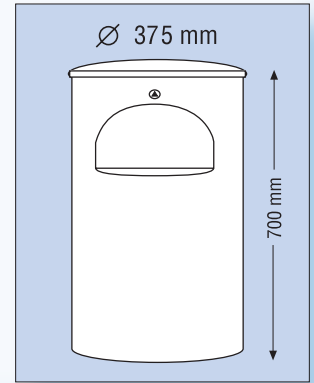


Wall mounted 30-600KS
Pole mounted 30-600KP



Litter-Safe™ L

- Highly polished stainless steel
- Capacity 60 ltr
- Wall or Pole mounted
- Internal aluminium container enabling safe top emptying
- Impressive design
- Sturdy construction
- Fire-safe
- Triangular key lock
- Weight 16 kg



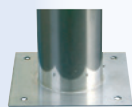
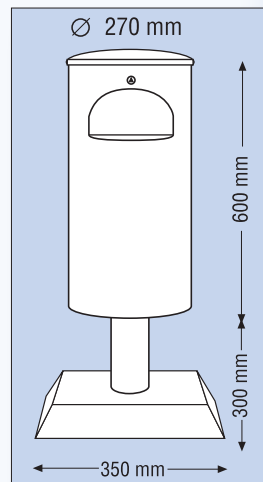
Wall mounted 60-700KS
Pole mounted 60-700KP



Litter-Safe™ M

FREE-STANDING

- Highly polished stainless steel
- Free-standing
- Choice of three bases
- Capacity 30 ltr
- Internal aluminium container enabling safe top emptying
- Wall or Pole mounted
- Impressive design
- Sturdy construction
- Fire-safe
- Triangular key lock
- Stainless steel base weight 21 kg



Also available
with a Flange
base.

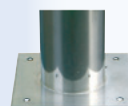
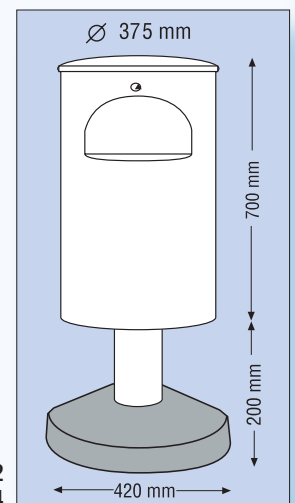
Stainless steel base 30-900K1
Flange base 30-900K2
Concrete base 30-900K4



Litter-Safe™ L

FREE-STANDING

- Highly polished stainless steel
- Free-standing
- Choice of three bases
- Capacity 30 ltr
- Internal aluminium container enabling safe top emptying
- Wall or Pole mounted
- Impressive design
- Sturdy construction
- Fire-safe
- Triangular key lock
- Concrete base weight 21 kg



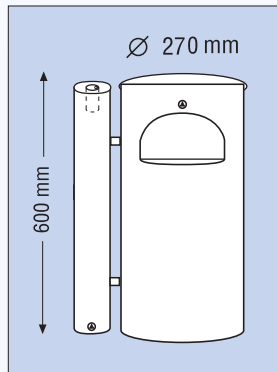
Also available
with a Flange
base.

Stainless steel base 60-900K1
Flange base 60-900K2
Concrete base 60-900K4



Litter-Safe™ Combi M

- Highly polished stainless steel
- Litter container capacity 30 ltr
- Wall or Pole mounted
- Impressive design
- Sturdy construction
- Fire-safe cigarette extinguishing in a separate container
- Cigarette container diameter 89 mm, length 600 mm
- Triangular key lock
- Internal aluminium container enabling safe top emptying
- Weight 11 kg

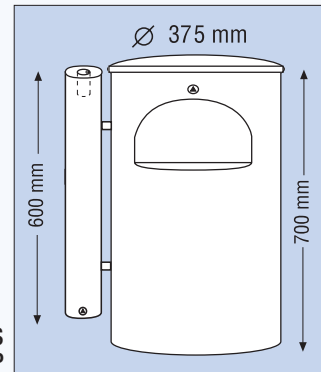


Wall mounted 30-602KS
Pole mounted 30-602KP



Litter-Safe™ Combi L

- Highly polished stainless steel
- Litter container capacity 60 ltr
- Wall or Pole mounted
- Impressive design
- Sturdy construction
- Fire-safe cigarette extinguishing in a separate container
- Cigarette container diameter 89 mm, length 600 mm
- Triangular key lock
- Internal aluminium container enabling safe top emptying
- Weight 19 kg



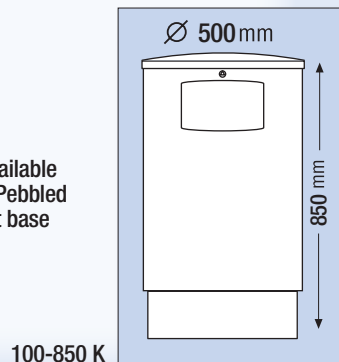
Wall mounted 60-702KS
Pole mounted 60-702KP



Litter-Safe™ 100 LITRES

- Highly polished stainless steel
- Litter container capacity 100 ltr
- Internal aluminium container enabling safe top emptying
- Impressive design
- Triangular key lock
- Sturdy construction
- Weight 30 kg

Also available with a Pebbled cement base (nro 6)



100-850 K



All our cigarette end containers are fire-safe constructed!



"The majority of litter bin fires are deliberately ignited"

In order to ensure safety, it is important to ensure litter containers are situated correctly and thoroughly fire-safe tested.

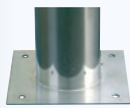
*Matti Waitinen
Principal of Helsinki Rescue School*



Litter-Safe™ Combi M

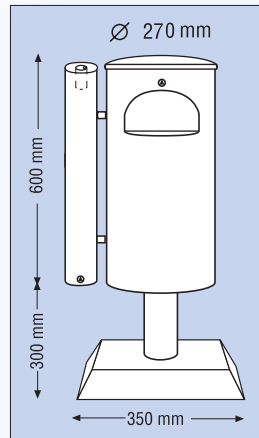
FREE-STANDING

- Highly polished stainless steel
- Litter container capacity 30 ltr
- Choice of three bases
- Impressive design
- Sturdy construction
- Fire-safe cigarette extinguishing in a separate container
- Cigarette container diameter 89 mm, length 600 mm
- Triangular key lock
- Internal aluminium container enabling safe top emptying
- Stainless steel base weight 22 kg



Also available with a Flange base.

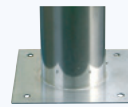
Stainless steel base (nro 1) 30-902K1
Flange base (nro 2) 30-902K2
Concrete base (nro 4) 30-902K4



Litter-Safe™ Combi L

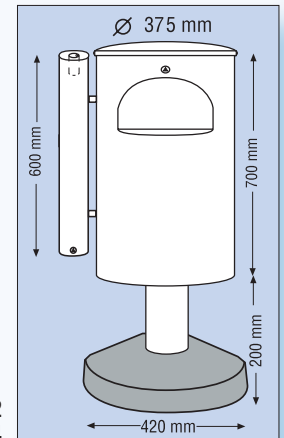
FREE-STANDING

- Highly polished stainless steel
- Litter container capacity 60 ltr
- Choice of three bases
- Impressive design
- Sturdy construction
- Fire-safe cigarette extinguishing in a separate container
- Cigarette container diameter 89 mm, length 600 mm
- Triangular key lock
- Internal aluminium container enabling safe top emptying
- Pebbled cement base weight 40 kg



Also available with a Flange base.

Stainless steel base (nro 1) 60-902K1
Flange base (nro 2) 60-902K2
Concrete base (nro 4) 60-902K4



High quality materials

All stainless steel products are manufactured from highest class components produced by Finnish steel mills.

Craftmanship

Tokset personel consist only of highly trained Finnish professionals. You can see the quality in details.

Maintenance

All products are practically maintenance free. We recommend lubrication of the lock and pivoted parts 1-2 times a year.

Fast delivery

Delivery of stainless steel products in 2-4 working days from order. Delivery of painted products in 6 – 10 days from order.

Reliability

Trusted business partner from 1993.

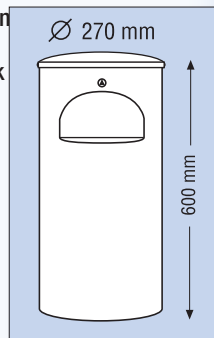
SAFE WASTE DISPOSAL IN A VARIETY OF COLOURS

These painted waste containers are made from hot zinc steel. Surfaces are coated with powder paint to withstand the effects of UV and weather conditions. All RAL paint chart colours are available. The only servicing action we recommend is lubrication of the lock and pivoted parts 1-2 times a year. Fire prevention has been taken to attention for all the products.



Litter-Safe™ M

- Hot zinc steel
- Stainless steel lid
- Powder painting using RAL colours
- Capacity 30 ltr
- Wall or Pole mounted
- Internal aluminium container enabling safe top emptying
- Impressive design
- Sturdy construction
- Fire-safe
- Triangular key lock
- Weight 9 kg

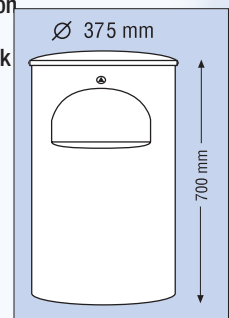


Wall mounted 30-60MS
Pole mounted 30-60MP



Litter-Safe™ L

- Hot zinc steel
- Stainless steel lid
- Powder painting using RAL colours
- Capacity 60 ltr
- Wall or Pole mounted
- Internal aluminium container enabling safe top emptying
- Impressive design
- Sturdy construction
- Fire-safe
- Triangular key lock
- Weight 16 kg



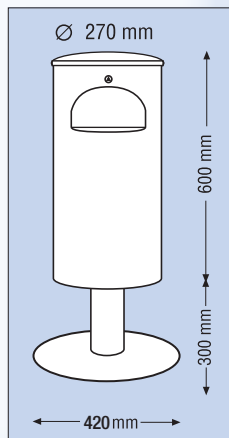
Wall mounted 60-70MS
Pole mounted 60-70MP



Litter-Safe™ M

FREE-STANDING

- Hot zinc steel
- Stainless steel lid
- Powder painting using RAL colours
- Capacity 30 ltr
- Wall or Pole mounted
- Internal aluminium container enabling safe top emptying
- Impressive design
- Sturdy construction
- Fire-safe
- Triangular key lock
- Flange base weight 20 kg



Also available with a Flange base.

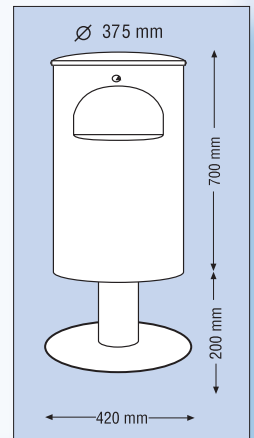
Flange foot (nro 2) 30-900M2
Flange base (nro 3) 30-900M3
Pebbled cement base (nro 4) 30-900M4



Litter-Safe™ L

FREE-STANDING

- Hot zinc steel
- Stainless steel lid
- Powder painting using RAL colours
- Capacity 60 ltr
- Wall or Pole mounted
- Internal aluminium container enabling safe top emptying
- Impressive design
- Sturdy construction
- Fire-safe
- Triangular key lock
- Flange base weight 25 kg



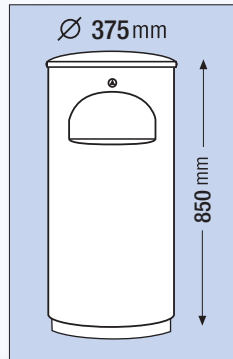
Also available with a Flange base.

Flange foot (nro 2) 60-900M2
Flange base (nro 3) 60-900M3
Pebbled cement base (nro 4) 60-900M4



Litter-Safe™ FREE-STANDING

- Stainless steel casing and pedestal
- Powder painting using RAL colours
- Litter container capacity 60 ltr
- Internal aluminium container enabling safe top emptying
- Impressive design
- Sturdy construction
- Triangular key lock
- Weight 45 kg



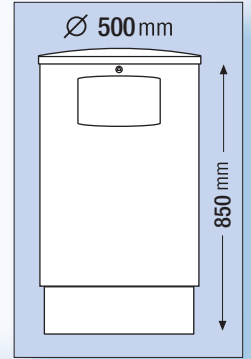
60-850 M



Litter-Safe™ 100 LITRES

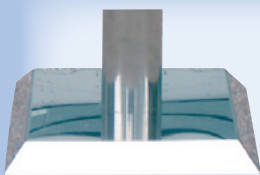
- Stainless steel casing and pedestal
- Powder painting using RAL colours
- Litter container capacity 100 ltr
- Internal aluminium container enabling safe top emptying
- Impressive design
- Sturdy construction
- Triangular key lock
- Weight 30 kg

Also available with a pebbled cement base (nro 6)



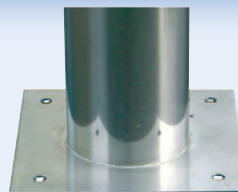
100-850 M

ATTACHMENT SUGGESTIONS



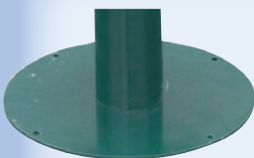
1. Stainless steel base

- Free-standing
- Can be attached to a smooth surface



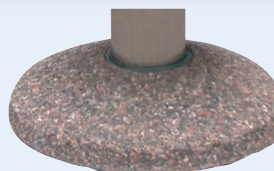
2. Flange foot

- Anchor to a secure or concrete surface (No 5)



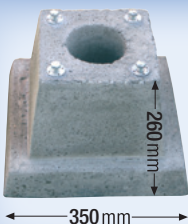
3. Flange base

- Normal base for painted containers
- Free-standing
- Can be attached to a smooth surface



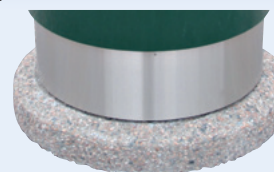
4. Pebbled cement base

- Free-standing



5. Concrete anchor

- To be embedded into the ground
- Weight 45 kg
- Attachment flange foot (nro 2)



6. Pebbled cement base

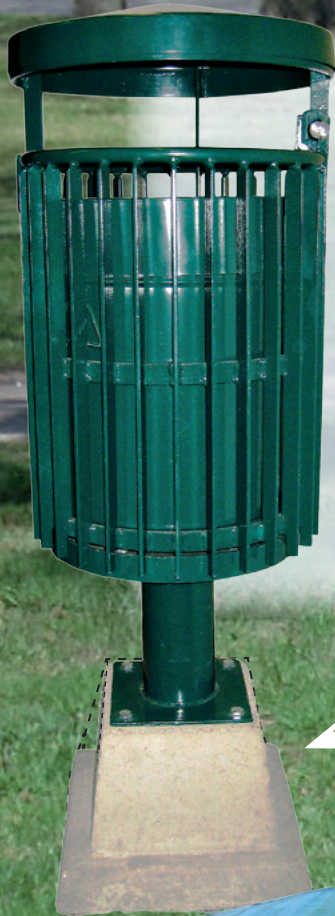
- Free-standing
- Weight 65 kg

Leading hotels and restaurants favour Tokset



STYLISH AND VANDAL-PROOF FOR PARKS AND OUTDOOR AREAS

Park litter containers are made from high-quality flat steel. Standard colours are matt black and green (RAL 6005). Special orders are available in all RAL colours



Hyde Park Steel L

Wall or Pole mounted

- Steel radius 5 x 25 mm
- Powder painted, standard matt black or green RAL 6005. Also other RAL colours.
- Internal painted container 60 ltr
- Triangular key lock
- Safe and ergonomic emptying
- Weight 40 kg
- Servicing: Lubrication of the lock and hinges 1 - 2 times a year

Wall mounted 60-700LS

Pole mounted 60-700LP

Flange foot 60-900L2

Attachment to the ground using a concrete anchor (No 5) or to a pebbled cement base (nro 6)

Robust underground embedded concrete base!



Hyde Park Steel XL

Free-standing

- Steel radius 5 x 35 mm
- Powder painted, standard matt black or green RAL 6005. Also other RAL colours.
- Internal painted container 120 ltr
- Triangular key lock
- Safe and ergonomic emptying
- Weight 100 kg
- Servicing: Lubrication of the lock and hinges 1 - 2 times a year

120-900L

Attachment to the ground using a concrete anchor (No 5) or to a pebbled cement base (nro 6)





"People in the service industry know just how expensive vandalism can be."

Huge savings can be made in the long term, when litter containers withstand the elements.

Tapulin Huolto Oy





**Our products are made to
withstand the most
demanding conditions.**

TOKSET

Lyhtytie 4, 00750 Helsinki - Finland
Tel. 010 422 8300, Fax 010 422 8301
Email: info@tokset.com
Website: www.tokset.com